



# MONTHLY MEMBERSHIP PROGRESS REPORT

District 3 K

Results as of: 2/29/2016

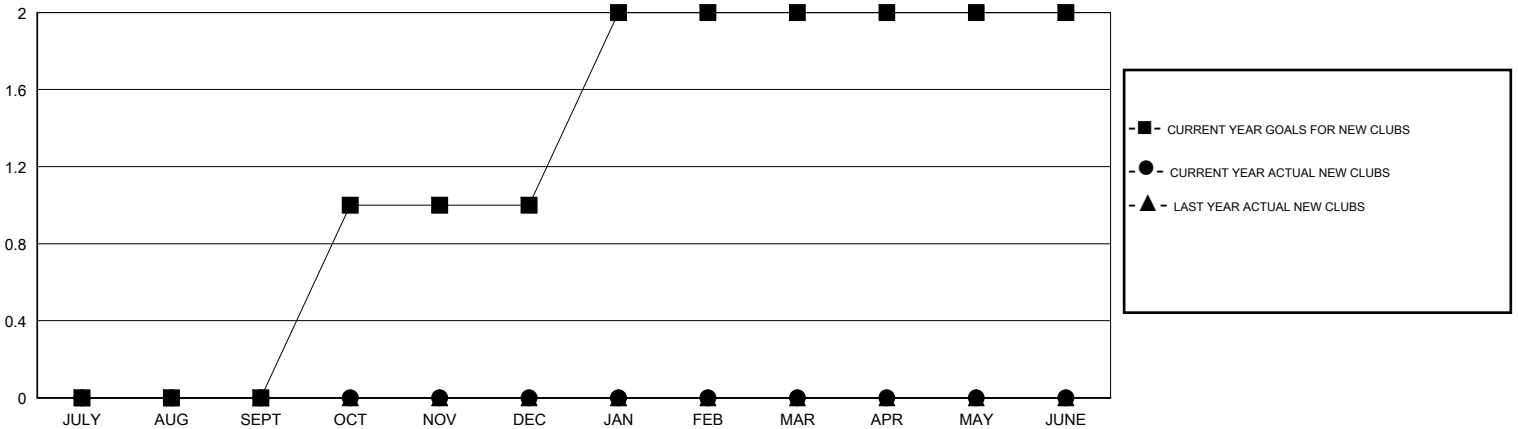
GMT: HAL GRIFFIN

LOCATION OKLAHOMA

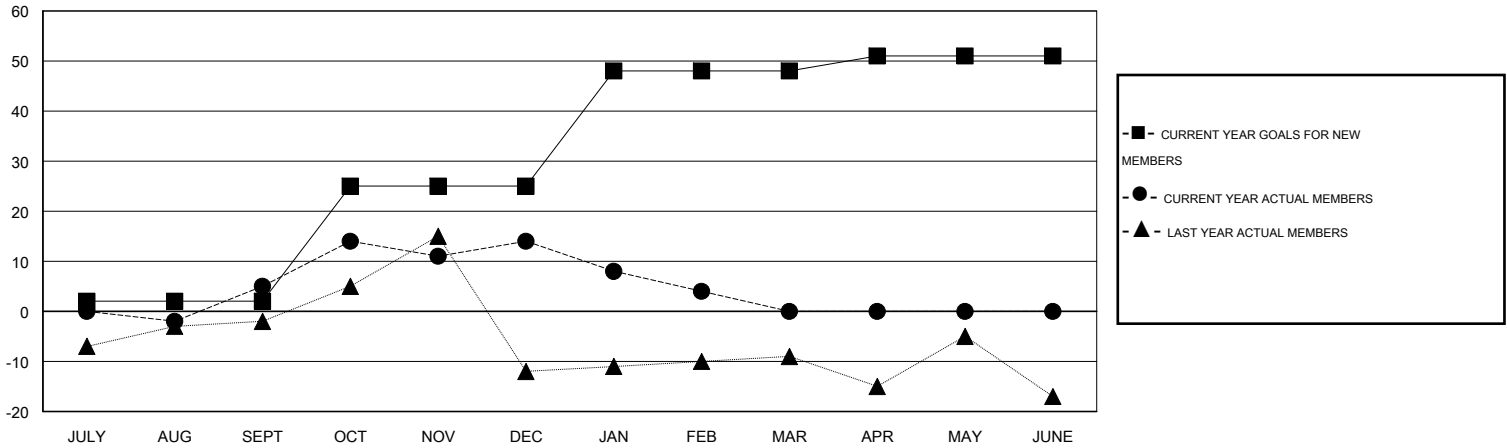
GMT CA 1

Clubs					Members				
RESULTS FOR 2015-2016					RESULTS FOR 2015-2016				
QUARTER	NEW CLUB GOAL	NEW CLUBS	DROPPED CLUBS	NET GAIN/LOSS	QUARTER	NEW MEMBER GOAL	CHARTER AND NEW MEMBERS ADDED	DROPPED MEMBERS	NET GAIN/LOSS
JULY/AUG/SEPT	0	0	0	0	JULY/AUG/SEPT	2	24	19	5
OCT/NOV/DEC	1	0	0	0	OCT/NOV/DEC	23	29	20	9
JAN/FEB/MAR	1	0	0	0	JAN/FEB/MAR	23	4	14	-10
APR/MAY/JUNE	0	0	0	0	APR/MAY/JUNE	3	0	0	0

GOALS AND ACTUAL NEW CLUBS CUMULATIVE



GOALS AND ACTUAL MEMBERS CUMULATIVE



DROPPED CLUBS: 0	21 CLUBS OF 35 ADDED 1 OR MORE NEW MEMBERS	<u>GENDER DISTRIBUTION</u>	
<u>DROPPED MEMBERS</u>		MALE	659 (69.59%)
DECEASED	<a href="#">CLICK HERE FOR HEALTH ASSESSMENT DATA</a>	FEMALE	288 (30.41%)
CLUB CANCELLED		FAMILY UNIT MEMBERS	88
OTHER		HEAD OF HOUSEHOLD	44
TOTAL		NON-HEAD OF HOUSEHOLD	44